

An Employee Owned Company

STUFFING BOX INSERT SEALS

WHAT IS THE MECO-PAC SEAL?

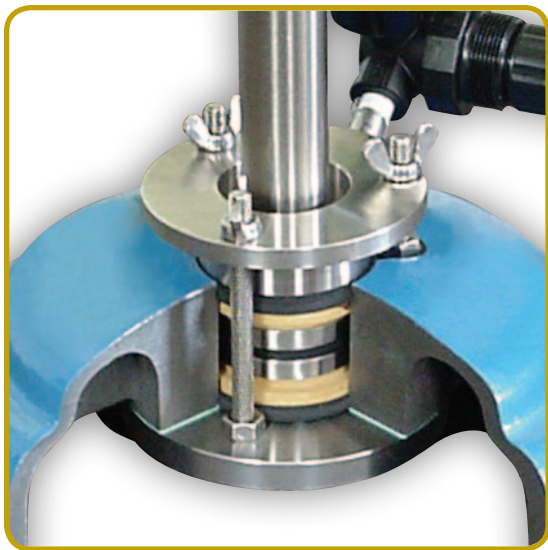
The MECO-PAC is an elastomer-driven, MECO seal designed to replace packing in stuffing boxes. It is used only in airlocks and rotary valves, where no installation clearance exists for an externally-mounted seal.

Like other MECO seals, the MECO-PAC seals on a plane perpendicular to the shaft, eliminating abrasive damage to the shaft caused by packing or lip seals. The MECO-PAC has proven effective in maintaining pressure differential across airlocks, without the frequent adjustments required by packings.



WHAT CONSTRUCTION IS AVAILABLE?

The MECO-PAC is available in several materials, for service in a wide variety of products, including food and pharmaceutical products, abrasives, hazardous and toxic materials. The MECO-PAC's function is identical to that of the MECO EA model seal.



MECO-PAC IN CUTAWAY STUFFING BOX

While the MECO-PAC can be built fully split, most installations do not offer sufficient radial clearance for split parts, and the seal is usually manufactured unsplit.

The MECO-PAC requires a minimum 5/16" packing section, a minimum bore depth of 1.31", and an air or gas purge of approximately 1/2 CFM at 3-5 psig.

All MECO Seals



Made in USA
2013PAC

www.mecoseal.com

MECO ENGINEERED SHAFT SEALS

Manufactured Since 1984 by:



216 Bay Point Road, Georgetown ME 04548 USA
Phone 1 207 371 2210 • Toll-free in North America 1 800 526 8800 • Fax 1 207 371 2169

www.mecoseal.com • Email sales@mecoseal.com

© 2013 Woodex Bearing Company, Inc. All rights reserved