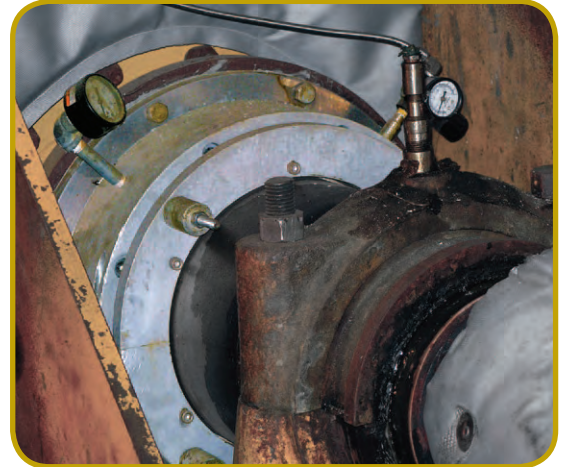


An Employee Owned Company

CUSTOM SHAFT SEALS FOR PLASTICS PROCESS

MECO seals offer plastics manufacturers effective, reliable shaft sealing for a wide variety of machinery handling difficult-to-seal products.

- Reactors & Top-Entry Agitators
- Extruders - Twin-shaft & Single-shaft
- Feeders, Conveyors & Elevators
- Ribbon Blenders, Paddle Mixers & Plow Blenders
- Vacuum Dryers
- Sigma Arm Mixers
- Airlocks



MECO SEAL ON POLYMER DRYER



MECO SEAL ON TOP ENTRY REACTOR AGITATOR

MECO SEALS ARE DESIGNED TO TOLERATE:

- operating temperatures (-60° to +550°F)
- full vacuum to +3 bar
- 1/4" and more of diametric runout
- thermal growth & shrinkage
- repeated pressure/vacuum cycles
- service up to 1,000 sfm
- thrust motion
- abrasive products
- exotic chemistry

MECO seals are installed as factory equipment on new, Coperion Werner & Pfleiderer ZSK extruders. MECO extruder seals eliminate the powder leakage typical of stuffing boxes, and the molten polymer leakage of viscoseals.

MECO provides effective seals for a variety of extruders compounding resins with abrasive fillers such as talc, TiO₂, glass fiber and wood.

They eliminate product contamination from packing residue, and permit longer at-grade production runs than conventional seals.

MECO seals can be designed elastomer-free, to eliminate materials compatibility problems caused by hydrocarbons and other aggressive chemicals.



MECO SEAL ON
COPERION ZSK-92MC EXTRUDER

www.mecoseal.com

MECO ENGINEERED SHAFT SEALS

Manufactured Since 1984 by:
WOODDEX
BEARING COMPANY, INC.

216 Bay Point Road, Georgetown ME 04548 USA
Phone 1 207 371 2210 • Toll-free in North America 1 800 526 8800 • Fax 1 207 371 2169
www.mecoseal.com • Email sales@mecoseal.com

© 2012 Woodex Bearing Company, Inc. All rights reserved

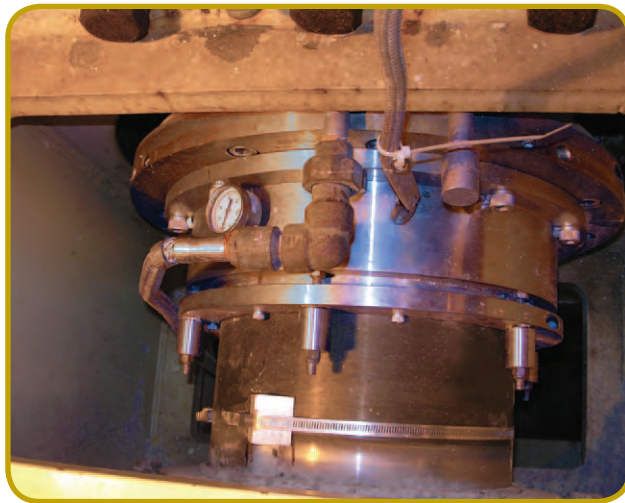
MECO SEALS OFFER:

- compatibility with most worn or damaged shafts,
- longer service life, predictable maintenance cycles,
- no product contamination from packing or purge gas,
- lower gas/air consumption (less than 1/4 cfm).
- effective vacuum containment.

The patented MECO-DR mechanical drive system can be incorporated to permit the axial shaft motion typical of pressure/vacuum cycles and thermal growth. Such motion is common both in vacuum and pressurized dryers.



DUPLEX MECO SEAL ON COPERION ZSK-380 EXTRUDER



MECO SEAL CONTAINING TOXIC GAS IN A REACTOR/DRYER

removal of the original seal.

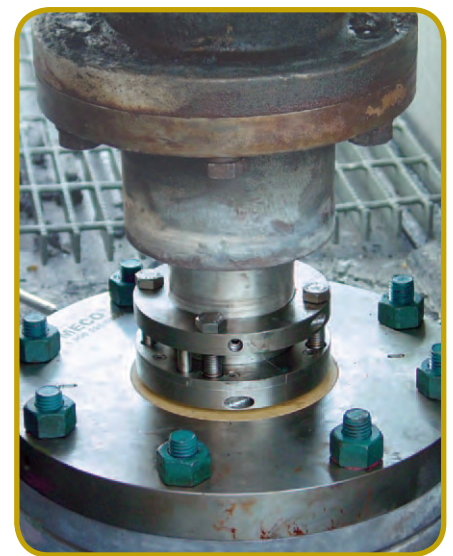
MECO seals are custom-engineered to each application. Our applications personnel will work with you to specify the best possible solution to your needs.

If you're a polyolefin or other primary resin manufacturer, a catalyst maker, a custom compounder or colorizer, or a manufacturer of specialty polymers, MECO has a seal for your machinery.

MECO dryer seals contain product and keep aromatic hydrocarbon measurements within acceptable concentrations. The seals frequently reduce process times in vacuum systems by improving vacuum efficiency & product consistency.

MECO seals a variety of support machinery, including screw conveyors and feeders, rotary airlocks, bucket elevators and drag chain conveyors. All offer high runout tolerance and positive, vacuum-tight shaft sealing. Some models can also be designed for European ATEX compliance.

Fully-split MECO seals and rebuild parts permit simple retrofits to existing equipment, usually with no need for modification other than



MECO SINGLE FACE SEAL ON A TOP ENTRY AGITATOR



MECO's design staff or your local distributor can help tailor the seal to your individual needs.

Below are a few examples of other MECO seal models.



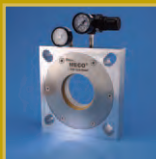
- Split OFS Model**
- Top and Side Entry
 - Solvents
 - Purge Free



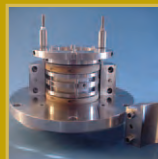
- EA Model**
- Abrasive Slurries
 - Adjustable on-the-Fly
 - Large Diameters



- AH Model**
- Blenders
 - Screw Conveyors
 - Tight Spaces



- HB Model**
- Standard Seals for C.E.M.A. and Metric Screw Conveyors



- EP Model**
- Reactor Vessels
 - Dryers
 - Extruders

Distributed by:

